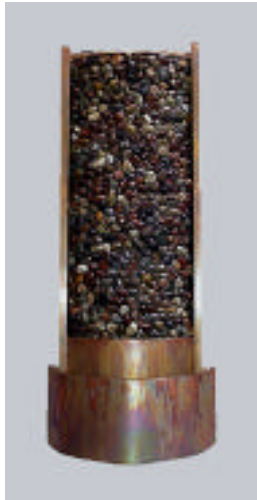


Pebble Spirit Falls Fountain Instructions

Water Wonders, Inc.®



Welcome to the Water Wonders® family. A few simple steps will ensure that your *Pebble Spirit Falls* remains a soothing, enjoyable fountain that brings the sights and sounds of nature to you. Two important considerations when choosing the proper location for your fountain are power source and a sturdy, mounting surface. Before you set your fountain up, decide where you are going to plug in the power cord. The fountain should be plugged into a standard GFI outlet. It can be mounted over a switched outlet if you wish to hide the cord, however a recessed box is not necessary.

Helpful Hints

Before getting started, keep in mind these important points which will help ensure a successful installation and smooth operation of your new fountain.

- Always wet pebbles before turning on pump.
- Do not fill pan closer than 1/2" from the top while it is running as water drains back into pan when the power is off and may cause overflowing.
- Be careful where the fountain is set up. Try not to place the fountain in a spot where it could potentially be bumped into or cause damage. Avoid delicate surfaces that could be damaged by splashing.
- Never use chemicals or copper cleaner on the fountain, as this will ruin the finish.
- Save these instructions for future reference.
- See trouble shooting guide for pump and light maintenance information
- Make sure the light does not stay on for an extended period of time without being submerged in water.
- **Be sure to mount the fountain inside the bracket in the pan when installing.**

TOOLS REQUIRED	HARDWARE INCLUDED
<ul style="list-style-type: none">• Level• Screwdriver (Philips)• Pencil	<ul style="list-style-type: none">• E-Z Ancors (x3)• Zinc #12 x 1-1/2" Hexhead Screw (x1)• Zinc #8 x 1-1/2" screws (x3)• Stainless Steel Screws #10 x _" (x2)

Pebble Spirit Falls Fountain Instructions

Water Wonders, Inc.®

****Very Important****

Keep These Instructions with the Fountain

In order to maintain the beauty and function of your fountain, it is very important that these simple steps are taken to ensure satisfaction for years to come.

Maintenance and Operation Techniques

- **The use of distilled water is highly recommended. This will prolong the life of the pump, and greatly reduce the occurrence of mineral build-up.**
- **Maintain a water level of 1/2" from the top of the pan by periodically adding water. Do not allow the pumps to run dry.**
- **Wipe away any excess water that may accumulate on the copper surfaces. Water on the outside of the copper will accelerate the verdigris (copper turning green) process.**
- **Use Pledge Furniture Polish with wax to help maintain the original finish of the copper. Spray the Pledge on a soft cloth and wipe the copper. This should be done 3-4 times a week.**
- **If you have a clear coated fountain...To clean the clear coated components of your fountain, use mild soap and a damp rag to remove stains and dust. Then take a damp rag that has no soap on it to clean off the soap residue.**
- **If the fountain is splashing, there are several steps that can be taken.**
 - **Raise the copper splashguard in the frame.**
 - **Increase the water level**
 - **Turn the pump volume down by using the adjustment switch on the side of the pump. To access the pump, slide the splashguard up in the frame. The pump is visible inside the water pan.**
- **Every four months, it is a good idea to clean the pump. The pump can be taken apart by sliding the plastic face off of the pump body, and the magnetic impeller can be removed and cleaned with a calcium/lime/rust remover.**

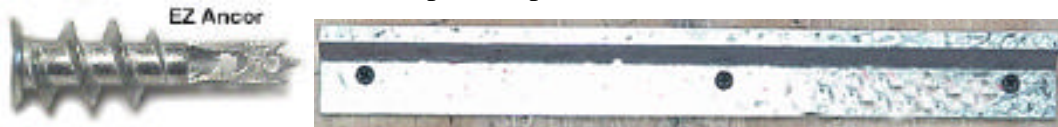
Pebble Spirit Falls Fountain Instructions

Water Wonders, Inc.®

1 HANG THE WALL BRACKET

Note: This wall bracket can be mounted without studs. If you encounter a stud when mounting the wall bracket, use the provided #12 x 1-1/2 Hexhead Screw. EZ Anchors are used for the other two holes. Each EZ Anchor™ has a weight capacity of up to 75 pounds.

When mounting the wall bracket, be sure to use a level. If the fountain is not mounted with a level, it may not run properly. *Pebble Spirit Falls* stands 62-1/2" tall. The top of the bracket is also where the top of the fountain will be. To hang the bracket, hold it up to the desired height using a level and mark out the three holes with a pencil. Put the bracket down and insert the E-Z Anchors into these three holes. **You must use the provided EZ Anchors™. Plastic anchors are not an acceptable substitute.** To insert E-Z Anchors, gently tap the tips into the drywall, and slowly screw in the anchor the rest of the way. Be careful not to over-tighten. Now mount the bracket with the zinc screws. The lip of the bracket points upwards.



2 SET THE FOUNTAIN INTO THE PAN

TWO PEOPLE ARE REQUIRED. Set the pan on the ground, open end up. One person must lift the fountain up, and drop the pump into the pan while lowering the fountain. The arrows below indicate the bracket inside the pan that accepts the bottom of the fountain.

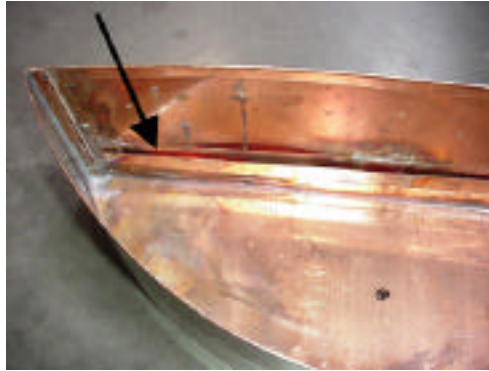
With one person holding the fountain and lowering it into the pan, the second person must guide the fountain into the copper bracket in the pan. Lower the fountain into the pan until it is completely and evenly seated in the copper bracket. Total height should be 62-1/2" tall. **DO NOT LET GO OF THE FOUNTAIN.**

Install the frame into the bracket in the pan.

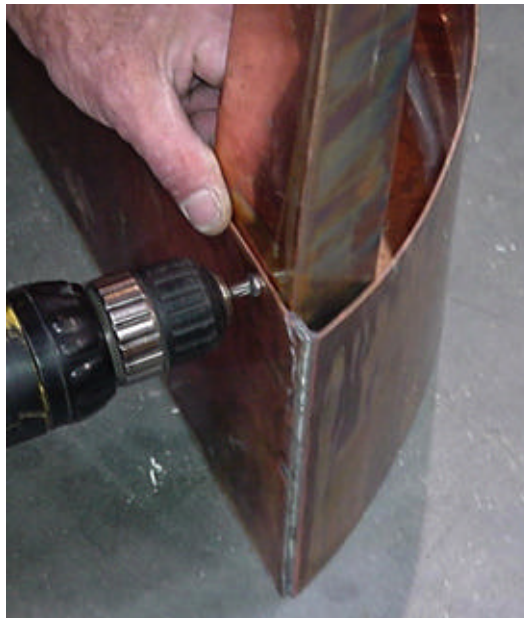


Pebble Spirit Falls Fountain Instructions

Water Wonders, Inc.®



Now take the two stainless steel screws that came in the plastic bag with the transformer and secure the pan to the fountain frame using a screwdriver or drill gun. Use the pre-drilled holes. **DO NOT LET GO OF THE FOUNTAIN.**



3 MOUNT THE FOUNTAIN

If you are plugging in the white cord into a switched outlet behind the fountain, do so at this time. Make sure that the outlet is switched off. If the fountain is going to be plugged into an outlet below the fountain, extend the proper length of the white cord below the bottom of the fountain. Lift the fountain and hang it from the opening at the very top of the fountain (see photo below) onto the wall bracket. The picture below shows the lip where the fountain is hung from. Make sure the fountain is completely seated onto the wall bracket.

Pebble Spirit Falls Fountain Instructions

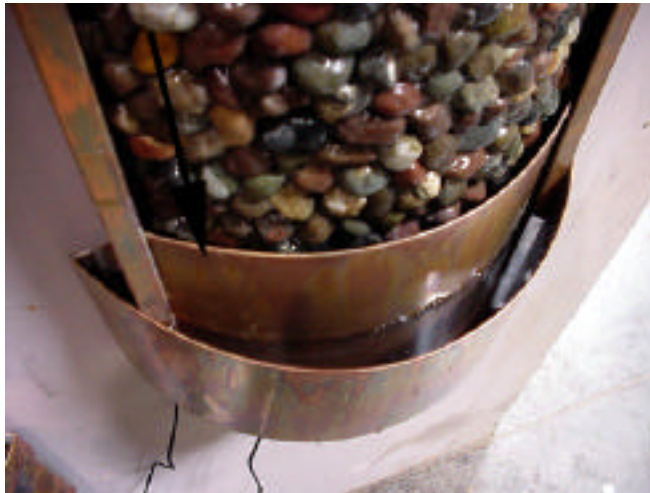
Water Wonders, Inc.®



4 INSTALL THE SPLASHGUARD

The copper splashguard fits into the slots on each side of the fountain frame, fitting the contour of the fountain.

Note: If the splashguard is not a tight fit and tends to slide down, you can adjust the tension by gently opening up the curve.



5 FILL WITH WATER

Fill the reservoir pan with water (distilled or purified is stipulated) up to within 3/4" from the top of the pan. Wet the pebbles with a spray bottle or sponge and plug the fountain in. As water is running off the top of the fountain and down the face, wipe the sponge across the top and the surface of the fountain several times to get the water to adhere to the pebbles. Any splashing that occurs when the fountain is running can be reduced by raising the splashguard higher in the side rails. **If water is not flowing over the entire face of the fountain, you can run your hand along the top**

Pebble Spirit Falls Fountain Instructions

Water Wonders, Inc.®

of the fountain where the water is spilling over to push the water over the pebbles.

Trouble-shooting:

- *Pump is too noisy:* Be sure the pump's output nozzle is securely inserted into the fountain's clear intake tube as forced water escaping the connection may cause unwanted air bubble noise. Make sure the pump is completely submerged. Also, a scotchbrite pad can be placed underneath the pump to dampen any noise that may occur.
- *Uneven water flow:* The fountain must be mounted level. Spray the dry surfaces of the slate until water flows evenly. Fountain will perform best when allowed to run continuously. Run a hand inside the trough at the top of the fountain to push the water up and over the edge of the slate. If necessary, place some small rocks into the top of the fountain to help push the water over the edges that are not flowing properly. Remove any excess silicone from the top lip of the fountain where the water spills over onto the slate. Use a piece of sandpaper, or a knife. Excess silicone may prevent water from flowing properly.
- *Water does not flow:* Make sure pump output nozzle is inserted into rubber intake tube, pump is completely submerged and the power receptacle is switched to an "ON" position.
- If the pump ever needs to be replaced, cleaned, or repaired, the fountain needs to be drained and taken off of the wall. On the back side of the fountain, there are two screws that hold the pan to the frame. Remove these screws and access to the pump will be gained.

Bulb Replacement: If the bulb of the fountain should burn out, contact Water Wonders® for a replacement. **RUBBER GLOVES MUST BE WORN TO PROTECT THE BULB WHEN REPLACING.** Pull the clear plastic cover off of the bulb, remove the old bulb, and replace it with a new one. Replace the plastic cover when finished.

Note: The process that we use to build these fountains can be described simply as peeling a layer of slate from a full slab of slate. When each layer is pulled, often times there are small diameter holes that are left on the slate that has been peeled off of the original slate. This is a result of the natural undulations and character of the slate that are transferred to the new piece. If any large holes are present, then that slate is discarded. Small holes are sometimes patched with real slate, or they left untouched. The presence of some small holes does not affect the performance or life span of the fountain. When water is flowing over the slate, the holes are not noticeable and do not pose a

Pebble Spirit Falls Fountain Instructions

Water Wonders, Inc.®

problem. If holes exist on your particular slate that you are dissatisfied with, a patch kit can be obtained by calling customer service at Water Wonders, 1-800-549-1880.

Although Water Wonders Fountains are designed not to splash, sweating from condensation and splashing droplets can occur if set up incorrectly. As a precaution against water stains, please protect fine surfaces under and near fountain.

If you have any questions regarding the set-up or maintenance of your fountain please call your dealer.